

Schedule 1

Item 1 Description of Agreement Area

A. External boundary description

The agreement area includes all of the land and waters within Lot 501 on CLK41 (Christmas Creek Pastoral Holding) located within the Native Title Determination Application QUD85/05 Gugu Badhun People 2 (QC05/07) being an area north of the northern boundary of the Gregory Development Road excluding former ML10267 and Lot 1 on OC54.

Note

Data Reference and Source

- Agreement boundary data compiled by National Native Title Tribunal.
- Rivers/Creeks and roads where available are based on Casement data sourced from Department of Natural Resources and Mines, Qld (1 February, 2012) – *else* Topographic vector data is © Commonwealth of Australia (Geoscience Australia) 2003.
- Cadastral data sourced from Department of Natural Resources and Mines, Qld (1 February 2012).
- Native Title Determination Application QUD85/05 Gugu Badhun People 2 (QC05/07) as accepted for registration by 22 April 2005.
- ML10267, as at 25 September 2002, sourced from Department of Natural Resources and Mines, Qld.

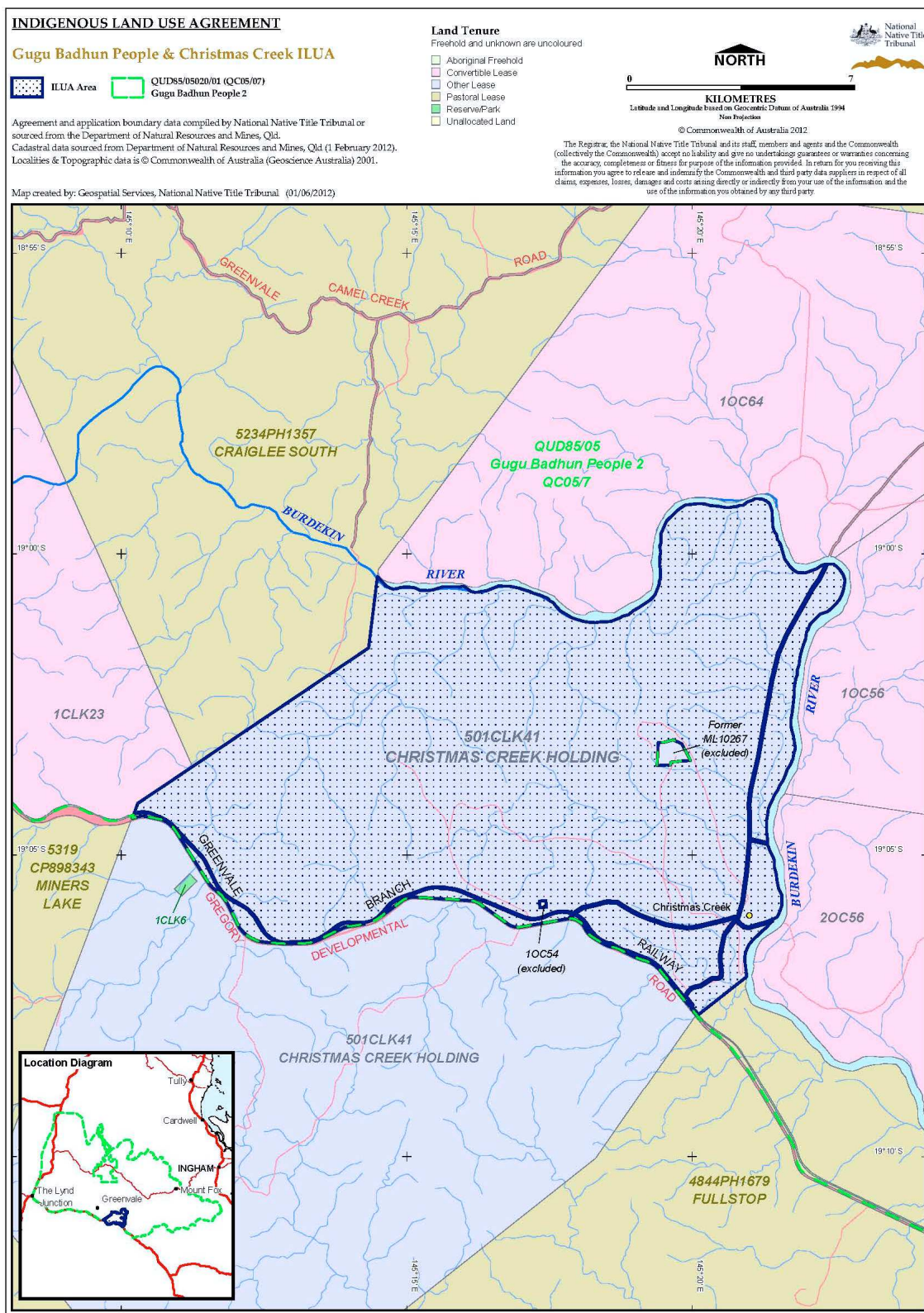
Reference Datum

Geographical coordinates have been provided by the NNTT Geospatial Services and are referenced to the Geocentric Datum of Australia 1994 (GDA94), in decimal degrees and are based on the spatial reference data acquired from the various custodians at the time.

Use of Coordinates

Where coordinates are used within the description to represent cadastral or topographical boundaries or the intersection with such, they are intended as a guide only. As an outcome to the custodians of cadastral and topographic data continuously recalculating the geographic position of their data based on improved survey and data maintenance procedures, it is not possible to accurately define such a position other than by detailed ground survey.

B. Map



Filepath:P:\GEO_INFO\Products\QLD\ILUA\2012\QIA2012_055 Gugu Badhun & Christmas Creek ILUA\Mapping\GT2012_0945 Map & Desc\20120601_QIA2012_055_Tenure_A3P.vor
 Map Ref: 20120601_QIA2012_055_Tenure_A3P.pdf

Item 2 Description of Lease

Term Lease 230131 comprising Lot 501 on CP CLK41 commonly known as Christmas Creek

Item 3 Description of Lessee

Eugene John Phillip Matthews and Heather Jean Matthews of Blue Range Station, Charters Towers in the State of Queensland